



# Access to health services for migrants in Mexico

XI Binational Policy Forum on  
Migration and Global Health

Miguel Ángel González Block

Luz Angélica de la Sierra de la Vega

Leticia Núñez Argote

San Antonio , October 2011

# Outline

- Importance of health care access in Mexico
- Demand for cross-border health care
- Repatriation of sick migrants
  - Repatriation routes and mechanisms
  - Use of hospital services in Mexico
- Remittance payments for dependant care
- Conclusions

# Importance of access to care for migrants in Mexico

- 12% of the population of Mexico live in the U.S.A.
- Bidirectional flow
- 60% without documents
- 21% have U.S. Citizenship
- 56% without health insurance
- Transnational health risks and health care
  - Healthy migrant effect
  - Undocumented Mexican migrants report less use of health care services in the USA
  - Mexican migrants have poorer quality of care compared with US-born

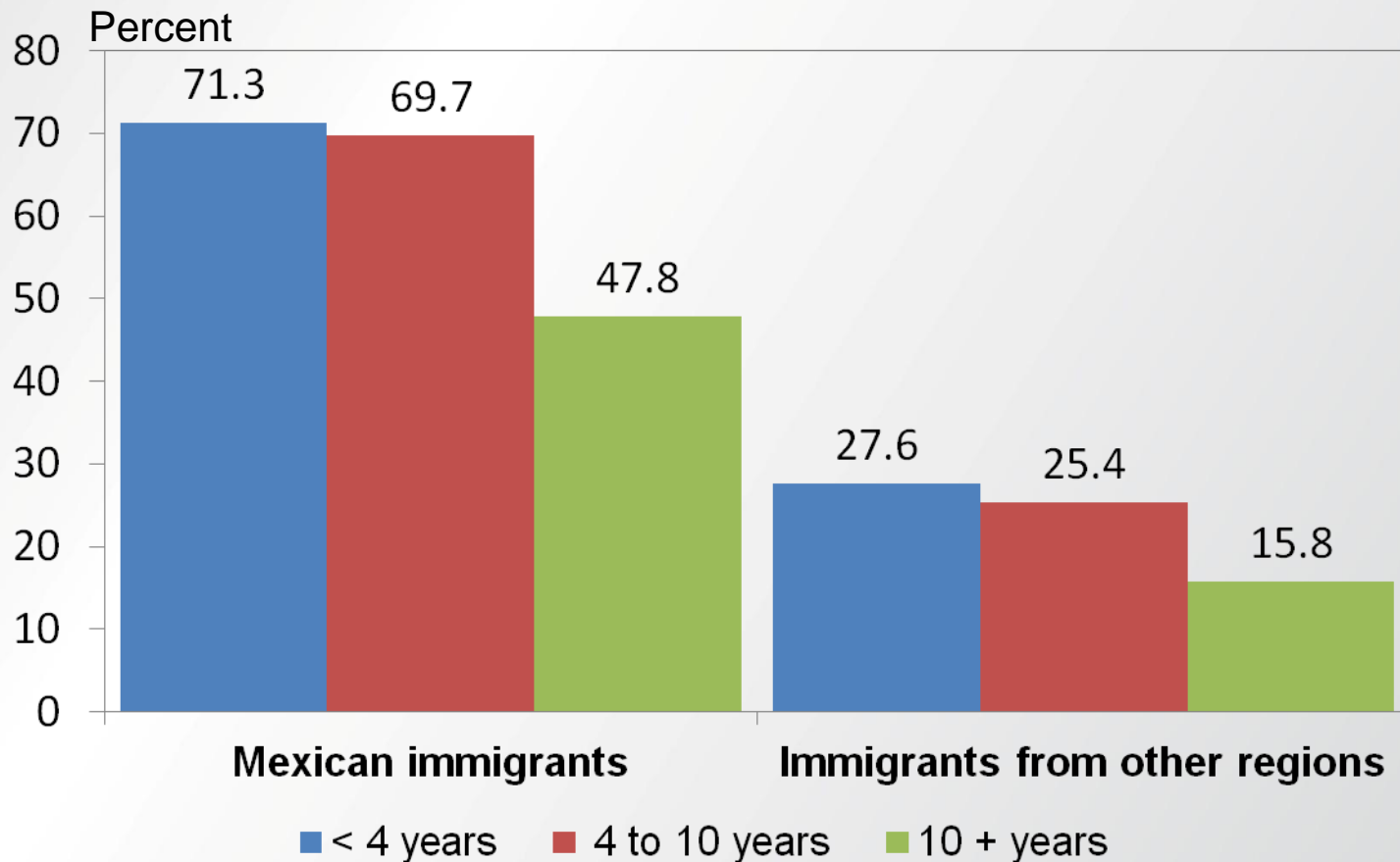
# Return migration: the facts

- 0 net migration today, but volatile
  - Economic crisis in the USA
  - Improved economy in Mexico
  - Sealing of the border
  - Violence in Mexico
- Lack of insurance in the US
  - No prospects of universal coverage for the undocumented
- Costs of care in the US
  - Prohibitive access and options south of the border



# Health insurance and migration in the U.S. according to years of residence

## Percent of population without health insurance



Source: Estimate by CONAPO, based on US Census Bureau *Current Population Survey (CPS)*, march 2007.

# Utilization of health services in Mexico by Mexicans in California

- Between 5.2% and 6.2% of Mexican immigrant adults living in California travel to Mexico for medical care every year
- Determinants of cross-border care
  - Need
    - poor self reported health
  - Availability of care in Mexico
    - living near the border
  - accessibility barriers
    - having no health insurance (OR 4.6)
  - acceptability issues
    - communications and cultural barriers

Wallace et al., 2009

# Repatriated Sick

## Hospital Utilization



# Repatriation of sick migrants

## Hospital sampling

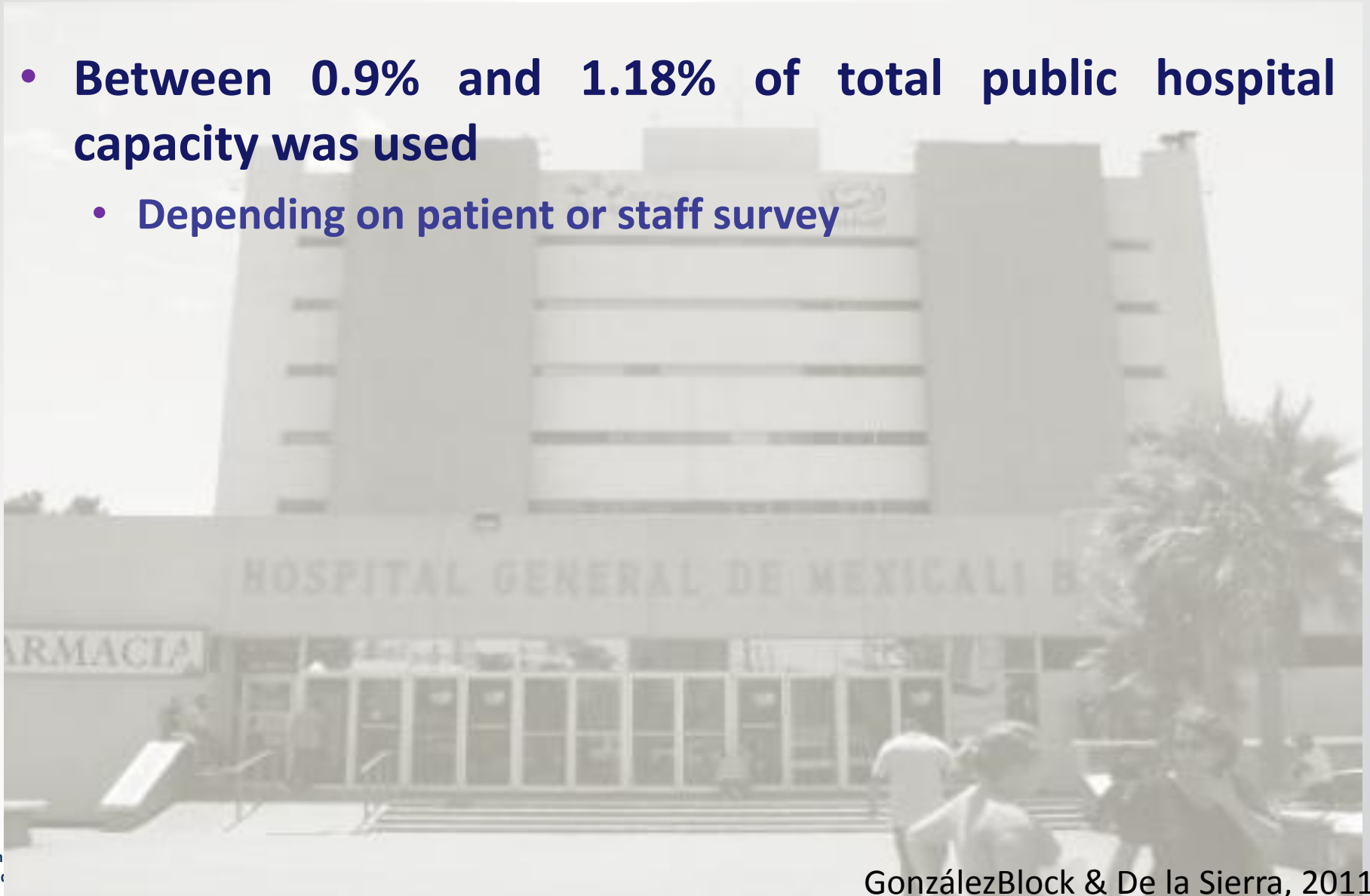
REGION	Hospitals			Total
	MoH General	MoH Referral	Private	
<b>COMMUNITIES OF ORIGIN</b>				
<i>Very high migration states</i>				
Universe	18	5	40	63
Sample	15	4	14	33
<i>High migration states</i>				
Universe	15	10	7	32
Sample	10	0	0	10
<b>BORDER</b>				
Universe	10	5	159	174
Sample	6	0	6	12
<b>TOTAL</b>				
Universe	43	20	206	269
Sample	31	4	20	55

# Hospital Discharges of Migrants With Recent Migratory History or Repatriated Sick Region and Type of Care, 2008

REGION		MoH		Private		Total	
		Sample	Expanded	Sample	Expanded	Sample	Expanded
<b>COMMUNITIES OF ORIGIN</b>							
<i>General hospitals</i>							
Patients with US residence in last year		1222	1516	--	--	1222	1516
Repatriated due to illness	Patient survey	733	1061	--	--	--	--
	Staff survey	910	1129	119	492	1029	1621
<i>Referral hospitals</i>							
Patients with US residence in last year		596	736	--	--	--	--
Repatriated due to illness	Patient survey	298	368	--	--	--	--
	Staff survey	320	480	--	--	320	480
<b>US-MEXICO BORDER CITIES</b>							
Patients with US residence in last year		887	1112	--	--	887	1112
Repatriated due to illness	Patient survey	443	556	--	--	--	--
	Staff survey	746	908	215	2416	961	3324
<b>TOTAL</b>							
Patients with US residence in last year		<b>2705</b>	<b>3364</b>	--	--	--	--
Repatriated due to illness	Patient survey	<b>1474</b>	<b>1985</b>	--	--	--	--
	Staff survey	<b>1976</b>	<b>2517</b>	<b>334</b>	<b>2908</b>	<b>2310</b>	<b>5425</b>

# Mexican migrants repatriated from the US who were treated at hospitals in Mexico

- **Between 0.9% and 1.18% of total public hospital capacity was used**
  - Depending on patient or staff survey



# Percent of hospitals that reported a primary diagnosis for repatriated migrants by region and type of care, 2008

PRIMARY DIAGNOSES	All hospitals	Border region		Interior region	
		Public	Private	Public	Private
Traumatism	56.4	100	0	80	7.1
Diabetes complications	38.2	0	16.7	56	35.7
Elective surgery	36.4	0	100	24	57.1
HIV-AIDS	20	33.3	0	32	7.1
Chronic renal failure	18.2	0	0	28	0
Cancer	18.2	0	0	28	7.1
Other chronic diseases	14.5	50	16.7	4	14.3
Respiratory diseases	12.7	66.7	16.7	8	0
Animal bites and dehydration	7.3	66.7	0	0	0
Psychiatric disorders	3.6	16.7	0	0	0

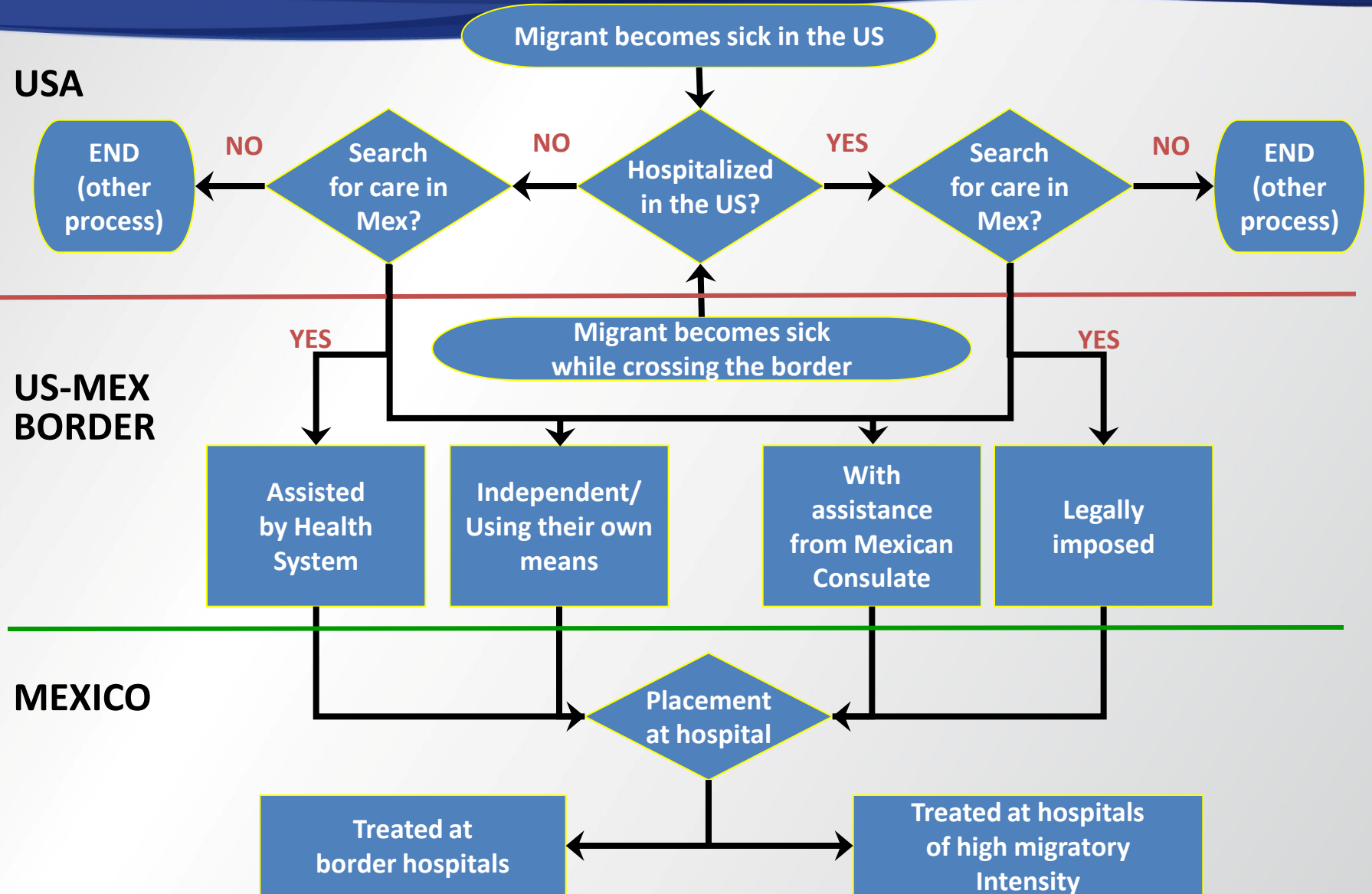
# Estimation of migrant hospitalization needs met in Mexico

- Three separate assumptions
  - That migrants without health insurance in the US are more likely to be hospitalized in Mexico
  - that migrants will repatriate only if they have households that will welcome them
  - that these households are more likely to welcome them if they have benefitted from remittances
- Members of household in the US estimated using Mexican Migration Project (MMP) database
  - 54.8% of households are dependent on at least one recent migrant
  - Each household is dependent on 1.4 recent migrants on average
- Hospitalization rate for the adult migrant population in the US is 6.8%, (2004 Medical Expenditure Panel Survey (MEPS))
- Uninsured in this population is 59.6%

# Repatriation routes and mechanisms



# Return migration paths

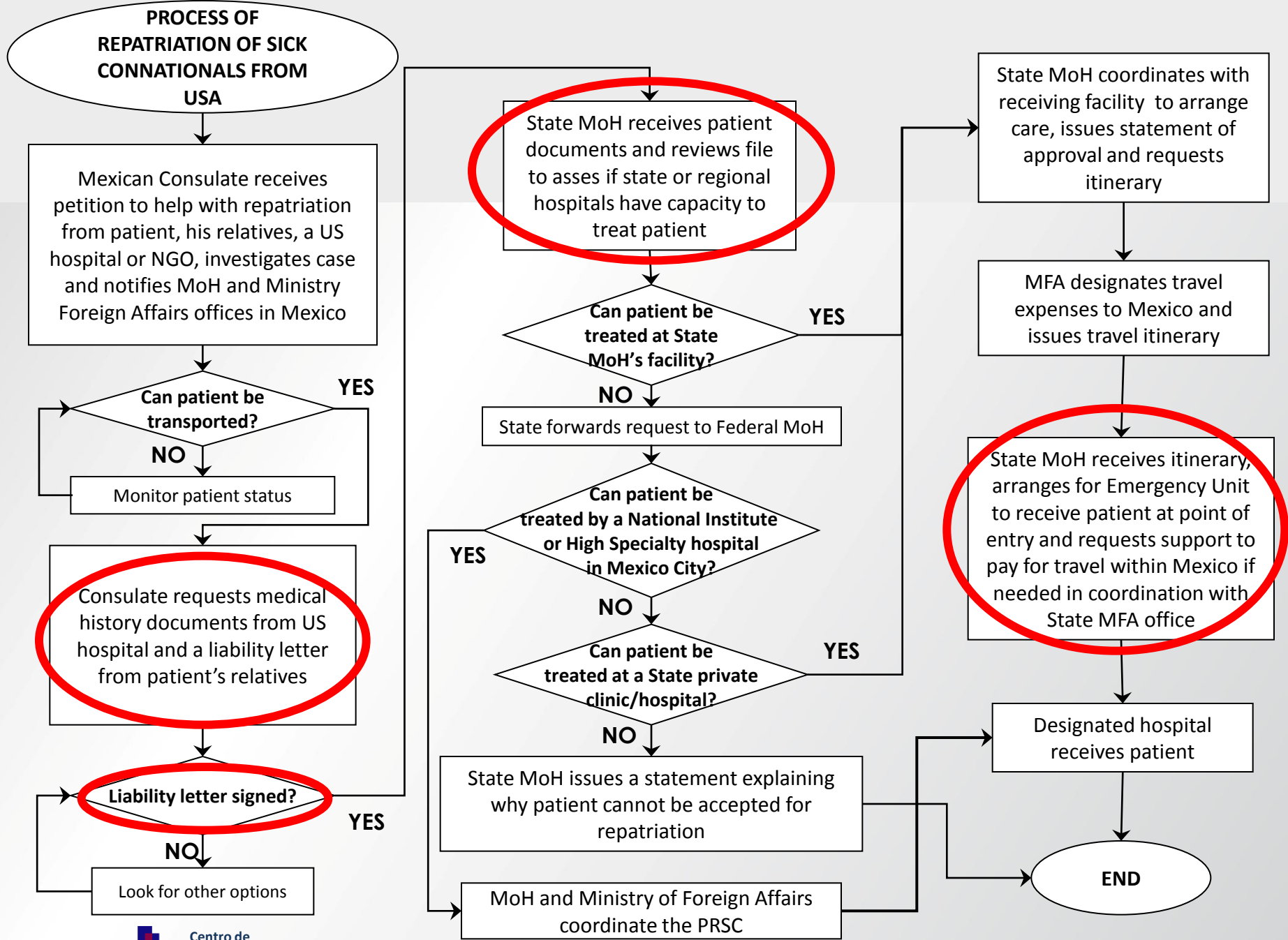


# Repatriation by Mexican Consulates

## Diagnoses of patients repatriated with the Consular Repatriation Program, 2008

Diagnosis	n	%
Chronic renal failure	22	28%
Brain diseases	18	23%
Paraplegia	8	10%
Cancer	7	9%
Mental illnesses	6	8%
Other diseases	18	23%
<b>TOTAL</b>	<b>79</b>	<b>100%</b>

Source: Ssa Dirección General para la Salud del Migrante



# Share of migrant hospitalization needs being met in HMIMs in Mexico

	Public Hospitals	Private Hospitals	Total
Repatriated hospitalized	1609	492	<b>2101</b>
% need from household dependents	2.41	0.74	<b>3.1</b>
% need from household dependents w/remittances	15.60	4.77	<b>20.4</b>
% need from uninsured household dependents	4.09	1.25	<b>5.3</b>
% need from uninsured household dependents w/remittances	26.44	8.09	<b>34.5</b>

# Remittance payments for dependant care



# Social and health program affiliation/utilization by type of household in la Mixteca, México, 2005

Services used	Total (3,394)	Households without migrants (1,469)	Households with migrants (1,925)	<i>p</i> value
	% or Median	% or Median	% or Median	
MoH	57.3	59.8	55.4	<b>0.01</b>
Private	22.3	19.7	25.7	<b>0</b>
Private and MoH	10.1	11.6	8.9	<b>0.01</b>
IMSS/ISSSTE	5.5	5.3	5.6	<b>0.7</b>

# Willingness to pay for binational insurance and use of services

	WTP		Not WTP		p
	%	n	%	n	
<b>Has dependents in Mexico</b>	303	50.4	413	58.8	<0.01
<b>Dependents used private services (last 12 m)</b>	141	23.5	220	31.3	<0.01
<b>Dependents used public services (last 12 m)</b>	95	15.8	160	22.8	<0.01
<b>Dependents have Seguro Popular</b>	218	36.3	313	44.6	<0.01

# Use of remittances to pay for health care in Mexico

Survey of Mexican nationals at LA Consulate. 2010. N= 1353

	WTP		Not WTP	
	n	%	n	%
<b>Menos de 10 %</b>	48	8.0	59	8.4
<b>10%</b>	61	10.2	72	10.3
<b>20%</b>	33	5.5	57	8.1
<b>30%</b>	31	5.2	45	6.4
<b>40%</b>	26	4.3	29	4.1
<b>50%</b>	43	7.2	72	10.3
<b>More than 50%</b>	48	8.0	70	10.0
<b>Nothing</b>	311	51.8	298	42.5

# Conclusions

- All public hospitals and most of private in high migration and border municipalities treat repatriated migrants
- A significant proportion of migrants are meeting their health needs there
- Remittances account for a significant part of health expenditure in Mexico
- Migration demands wide-reaching state policies and a grand vision
- Mexico can initiate a binational health insurance program of great global interest
- Significant capacity and interest in collaboration exists among key players in both countries

# Recommendations

- Support and develop binational repatriation networks to ensure the adequate return of Mexican migrants
- Integrate a national program for repatriation that ensures quality care in Mexico
- Create an IT platform as part of the repatriation program
- Strengthen the Seguro Popular affiliation plan for migrants, ensuring portability nationwide
- Include migratory history in medical records and surveys
- Strengthen access to services in Mexico through Ventanillas de Salud

# References

- **Pew Hispanic Center. Mexican Immigrants in the United States 2008. Fact Sheet [Serie en internet] 2009 [Consultado 2009 junio 25];1-5.**  
<http://pewhispanic.org/files/factsheets/47.pdf>.
- González-Block MA, De la Sierra LA, González LM, Becker S, York P, Gardner S, *et al*. Salud migrante: propuesta de un seguro binacional de salud. Cuernavaca: Instituto Nacional de Salud Pública 2008.
- Leite P, Castañeda X. **Mexicanos en Estados Unidos: (falta de) acceso a la salud. CONAPO: La Situación demográfica de México [Serie en internet] 2008 [Consultado 2009 julio 15]; 117-128.**  
<http://www.conapo.gob.mx/publicaciones/sdm/sdm2008/08.pdf>.
- Wallace S, Castañeda X. **Demographic Profile of mexicans in the United States.** Health initiative of the Americas. University of California (UC) Berkeley School of Public Health [serie en internet] 2008 [consultado 2009 noviembre 20]. Disponible en: <http://hia.berkeley.edu>.
- Nigenda G, Ruiz-Larios JA, Bejarano-Arias RM. Análisis de las alternativas de los migrantes mexicanos en Estados Unidos de América para atender sus problemas de salud. *Salud pública de México* 2009; 51:407-416.

# References

- González-Block MA, De la Sierra LA. Health Care Utilization by Mexican Migrants Returning to Mexico Due to Il-Health. *BMC Public Health* 2011; 11:241
- Landeck M, Garza C: **Utilization of physician health care services in Mexico by U.S. Hispanic border residents.** *Health Marketing Quarterly* 2002, **20**:3-16.
- Wallace S, Mendez-Luck C, Castañeda X: **Heading south: Why mexican immigrants in California seek health services in Mexico.**  
*Med Care* 2009, **47**:662-669.
- Vargas-Bustamante A, Ojeda G, Castaneda X: **Willingness to pay for cross-border health insurance between the United States and Mexico.**  
*Health Affairs* 2008, **27**:169-178.
- Adams PF, Heyman KM, Vickerie JL: *Summary health statistics for the U.S. population. National Health Interview Survey, 2008. Volume 10.* Washington, D.C.: National Center for Health Statistics: Vital Health Stat; 2009.
- Pitkin Derosé K, Bahney BW, Lurie N, Escarce JJ: **Review: immigrants and health care access, quality, and cost.** *Med Care Res Rev* 2009, **66**(4):355-408.
- Salgado de Snyder VN, González-Vázquez T, Infante-Xibille C, Márquez-Serrano M, Pelcastre-Villafuerte B, Serván-Mori EE. **Servicios de salud en la Mixteca: utilización y condición de afiliación en hogares de migrantes y no-migrantes a EU.** *Salud Publica Mex* 2010;52:424-431.