

U.S-Latin America Migration and Health: “the Way Forward”



Stephen Waterman
Lead, U.S. – Mexico Unit
Division of Global Migration and Quarantine (DGMQ)
NCEZID

Policy Forum on Migration and Global Health
October 4, 2011

National Center for Emerging and Zoonotic Infectious Diseases

Division of Global Migration and Quarantine



Overview

- ❑ **Division of Global Migration and Quarantine**
 - *U.S.-Mexico Unit*
- ❑ **Latin American migrants in the U.S (focus on Mexico)**
- ❑ **CDC activities and programs on migration and health**
- ❑ **Opportunities for collaboration**

Division of Global Migration and Quarantine

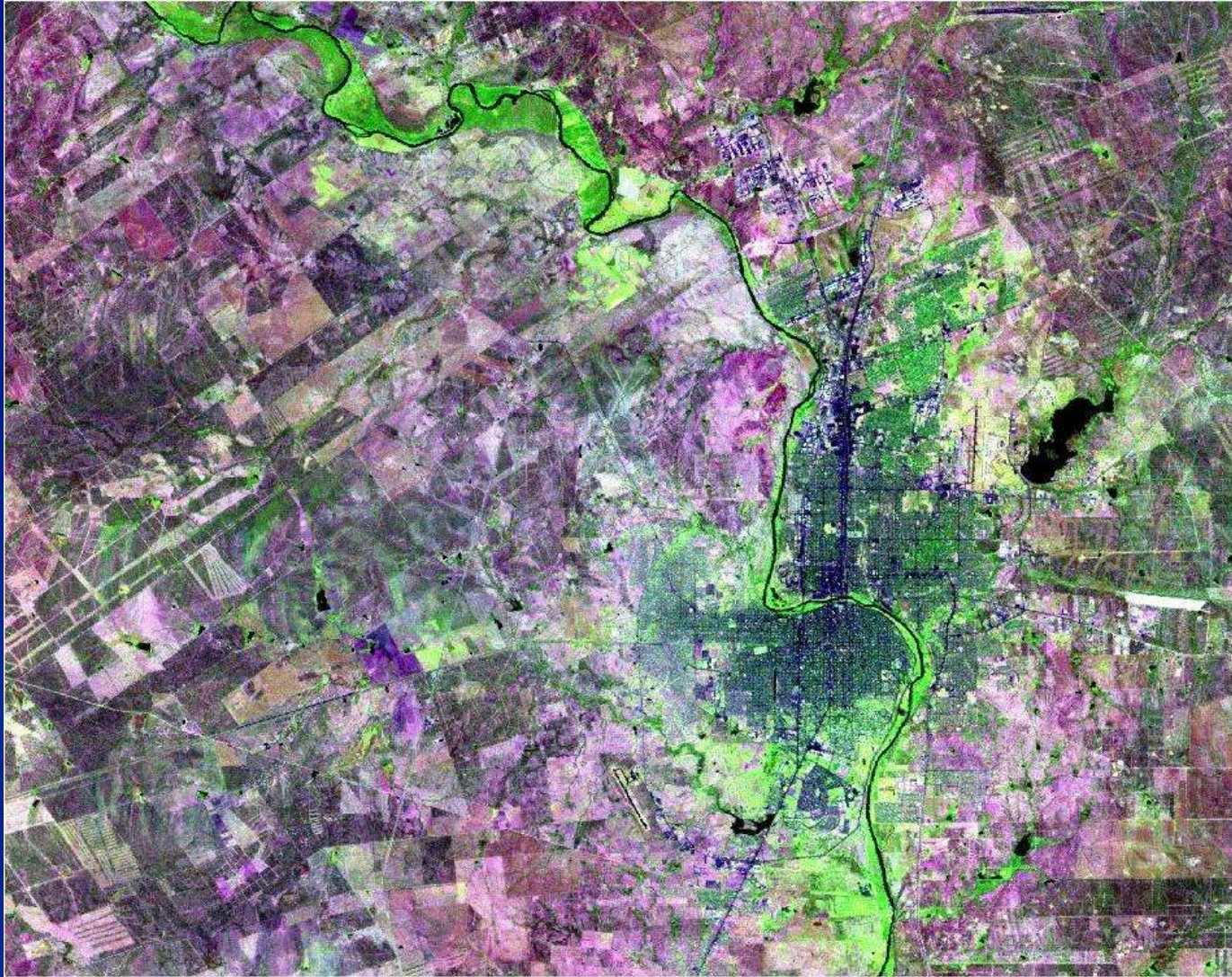
Public Health Mission

- ❑ Reduce morbidity and mortality among immigrants, refugees, travelers, expatriates, and other globally mobile populations*
- ❑ Prevent the introduction, transmission, and spread of communicable diseases through regulation, science, research, preparedness, and response*

*Division of Global Migration
and Quarantine
U.S.-Mexico Unit*

- *Focus on US-Mexico binational public health issues to promote the health of migrant and other mobile populations in the North American region*
- *San Diego and El Paso Quarantine Stations*

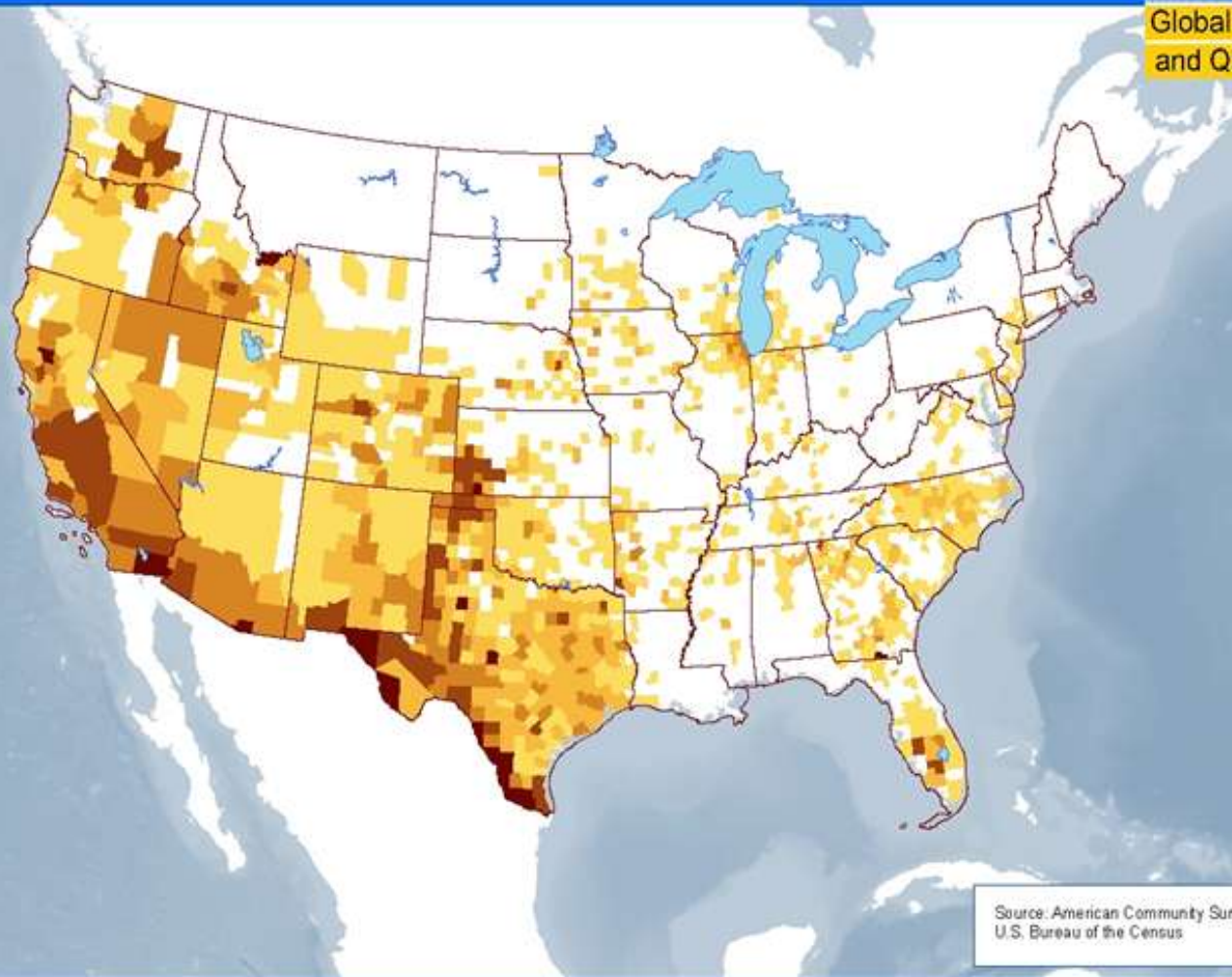
Border Sister Cities – a single epidemiologic and ecologic zone



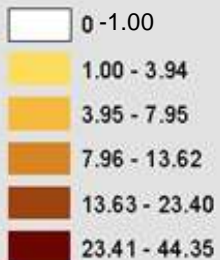
Percent of the Total Population Born in Mexico: 2009

CDC

Global Migration
and Quarantine



Percent of Total Population Born in Mexico



Source: American Community Survey, 2005-2009
U.S. Bureau of the Census

Total Mexican-born = 11.3 million (3.7% of U.S population)

Migrants: a shared population



Latin American migrants in the U.S First Generation

Country of Birth	Numbers
Mexico	11,478,413
Guatemala	798,682
Colombia	609,845
Honduras	467,943
Ecuador	411,826
Peru	406,910
Bolivia	74,024
Other Latin Americans	6,207,904
Total	20.5 million

Other populations of interest

Population	Number
<i>Mexican-origin residents in the U.S.</i>	<i>32 million</i>
<i>- U.S.-born children of Mexican parents</i>	<i>~6 million</i>
<i>U.S citizens living in Mexico</i>	<i>1 million</i>
<i>Northbound legal crossings/year across US Mexico ports of entry</i>	<i>126 million admissions*</i>
<i>Mexico:</i>	
<i>-#1 country of origin of international visitors to the U.S</i>	
<i>-#1 country of destination for U.S tourists</i>	

Health of Migrants: the way forward

- 2008: 61st World Health Assembly Resolution on "the health of migrants"
 - Concrete action points for WHO and Member States
- 2010: WHO/IOM/Government of Spain Global Consultation on Migrant Health
 - Reach consensus on priority areas and strategies

WHO/IOM Operational framework

Thematic areas

1. Access to
health
services

2. Monitoring
migrant
health

3.
Policies/legal
frameworks

4.
Partnerships
and networks

Cross-cutting issues

A. Active participation of migrants

B. Multinational/multisectorial

A. Active participation of migrants

- ❑ *Collaboration with the Health Initiative of the Americas and other migrant and community-based organizations and initiatives*

B. Multinational collaboration

- Address migration health at all stages of the migration process (countries of origin, transit and destination)
- Beyond the health sector
 - Migration authorities, academia, foreign consulates, migrant associations

B. Multinational collaboration (Cont.)

- *MOU U.S HHS and Mexico's Secretariat of Health on Cooperation in the Fields of Public Health and Science*
 - *Established in 1996, renewed 2001 and 2008*
 - *Areas of Cooperation: Health of migrants, ... and border populations*
- *U.S-Mexico Border Health Commission*
 - *Border region: within 62 miles, on either side of the international border line*

US-Mexico Binational Technical WG Infectious Disease Section

- ❑ **Established in 2010 to provide closer CDC-MOH link and framework**
 - *Annual meetings and trainings*
 - *U.S.–Mexico Guidelines for Coordination on Epidemiologic Events*
 - *Facilitated response to recent binational outbreaks*



Guillain-Barré syndrome outbreak in Yuma, AZ – Sonora, MX

- ❑ *Total of 26 cases, associated with Campylobacter (26X expected background US rate)*
- ❑ *Communication between Sonora, DGE, Arizona and CDC experts*
- ❑ *Binational field investigation*
- ❑ *Enhanced lab capacity at InDRE and CDC*
- ❑ *Lab reference testing at CDC*
- ❑ *Likely source: contaminated water exposures*



B. Multinational collaboration (Cont.)



- ❑ **DGMQ assignee to MOH Epidemiology as CDC Liaison** (*planned for 2011*)
 - *GID secondment to PAHO Mexico Office*

- ❑ **CoAgs with U.S.-Mexico Foundation for Science**

Multinational collaboration: Opportunities

- ❑ *Reaffirmation of HHS-MOH MOU*
- ❑ *U.S.-Mexico BTWG, additional sections:*
 - *Non-communicable diseases*
 - *Health communication*
- ❑ *Strengthen collaboration between CDC/DGMQ and Mexico's Migrant Health Program*

1. Access to health services

- Promote equitable access to health promotion, disease prevention and health care
 - *HHS Action Plan to Reduce Racial/Ethnic Health Disparities*
 - *Health Care Reform Act*
- Cultural and linguistically appropriate health services
 - *National Standards on Culturally and Linguistically Appropriate Services*

1. Access to health services (Cont.)

- *Continuity of care for TB cases crossing the border*
 - *CureTB and TB Net programs*
 - *Partners: CDC, U.S and Mexico TB programs, USMBHC, ICE*
 - *TB care is readily available throughout U.S (including migrants)*
 - *Current focus on addressing deportation of migrants with TB*

Access to health education

- *Mapping geographic distribution and characteristics of migrant populations in U.S.*
- *Identifying trusted sources of information*
- *Developing a health communication plan*
- *Translating health education materials*

1. Access to health services: Opportunities

- ❑ *Enhance cross-border collaboration on health education targeting migrants*
 - *Binational Health Week*
 - *U.S-Mexico BTWG*
 - *Ventanillas de Salud*

- ❑ *Cross-border TB continuity of care:*
 - *Develop protocol for deported migrants with TB*



2. Monitoring migrant health



- *Border Infectious Disease Surveillance (BIDS)*
 - *Since 1998*
 - *Established the foundation and trust for binational collaboration on surveillance and emergency response*

U.S.–Mexico Guidelines for Coordination on Epidemiologic Events

□ Implementation of the Guidelines

- *2011 CSTE Position Statement supports implementation of guidelines and development of communications pathways*

Enhanced Epidemiology and Laboratory Capacity

- ❑ *CDC support to expansion of Mexico's influenza laboratory capacity (RT PCR at InDRE and 31 state labs)*
- ❑ *Expanded surveillance and collaborations on burden of disease to guide vaccine policy*
- ❑ *Training in PFGE at CDC; certification in PulseNet Latina y Caribe*



2. Monitoring migrant health (Cont.)

- Enhance routine health information systems
 - Developed recommendations on standardized migration-related variables (eg., country of birth, duration of residence, preferred language) for all national health data sources

2. Monitoring migrant health (Cont.)

- Conducting targeted migrant health studies
 - *Mexicans and Salvadorians in L.A County*
 - *Survey of migrant-sending communities in Yucatan and sister communities in the U.S*

2. Monitoring migrant health: Opportunities

- ❑ Pilot Guidelines
- ❑ Enhance exchange of information between national and local disease surveillance and other health information systems
- ❑ Multinational (periodic) standardized integrated migrant surveys

3. Policies and legal frameworks Opportunities

- Promote coherence among policies of different sectors and across countries that may affect migrants' health

Broad opportunities

- ❑ **Continue to build trust and institutionalize collaborations to transcend changes in leadership in CDC and MOH**
- ❑ **Collaboration in strategic investments vs. emergency-based response**
- ❑ **Coordination among U.S and Mexico (and Latin America) agencies working on migrant health**
 - *Integration efforts: HHS ASPR and OGA, NIH, DHS – ICE, CBP, USDA, FDA, COFEPRIS, SAGARPA, Secretariat Foreign Affairs*

Thank you!

¡Muchas gracias!

For more information, please contact:

Centers for Disease Control and Prevention

1600 Clifton Road NE, Atlanta, GA 30333

Telephone: 1-800-CDC-INFO (232-4636) / TTY: 1-888-232-6348

E-mail: cdcinfo@cdc.gov Web: www.cdc.gov

The findings and conclusions in this report are those of the authors and do not necessarily represent the official position of the Centers for Disease Control and Prevention.

National Center for Emerging and Zoonotic Infectious Diseases

Division of Global Migration and Quarantine

